



Facilities Management
Capital Construction & Renovations

Leake Building | 1450 Leake Drive
P.O. Box 400726, Charlottesville, VA 22904-4726
(434) 982-4621 | **Fax (434) 982-4628**
www.fm.virginia.edu

Date: 2024_06_25

Alert No. 1

CONSTRUCTION ALERT

Newcomb Hall Crane Lift

ITEMS OF INTEREST:

- Start on June 29 at 7:00am
- End by June 30 @ 6:00pm
- Loading dock area behind Newcomb and Clemons

EXIT & SIDEWALK ACCESSIBILITY

- Work blocks existing building exits, and was reviewed with OUBO prior to blockage.
- Work blocks existing sidewalks, and was reviewed with OUBO prior to blockage.
- No impact to existing building exits and sidewalks.

BACKGROUND:

- This is for a crane lift to get HVAC equipment to the 5th floor penthouse.
- See map below for extra details

ISSUED BY:

- Chris Bentley – UVA C&RS – Construction Manager – 434-981-2952

PHOTOS/MAPS OF AREAS AFFECTED:

Crane Lift Construction Alert

Start Date: June 29 @ 6:00am
End Date: June 30 @ 6:00pm

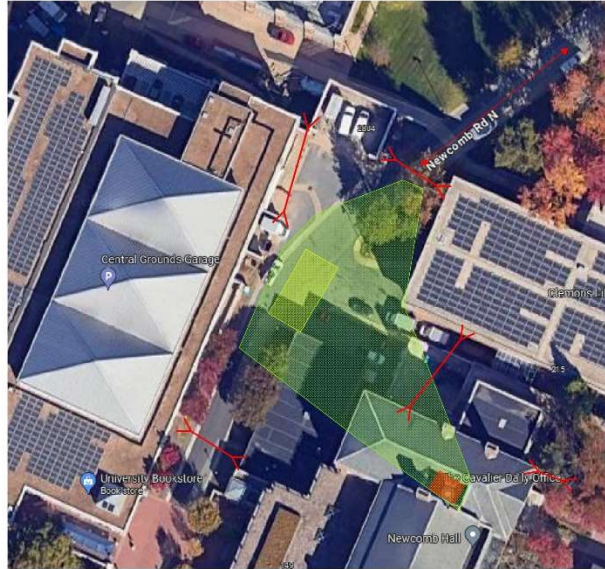
There will be a lift stop from 9:45am to 11:15am on June 29 for event in Newcomb Theater.

During Crane lift the following areas need to remain clear(green area on map):

Newcomb Theater
3rd Floor Library
4th Floor Attic Space

Access to Book Store loading dock and rear parking garage entrance will remain open. There will be times that we will be blocking access as the material arrives on site. We will minimize the interruptions.

Access to Catering will be blocked during the crane lift.



- Access Control Points - > <
- Load In / Out Route - < >
- Crane Location - [Yellow Box]
- Swing Path - [Green Box]
- Drop Location - [Red Hatched Box]

END OF ALERT