





Life safety CAD drawings will need to be included with all phases of drawing submittals. Any rated line shall be polylines. All areas shall be bound by a closed polyline. Any hatching shall be a single hatch entity per area. Last, CAD drawings will need to conform to the following layer, color, and line type standard: (See included LIN file for importing line types directly into CAD)

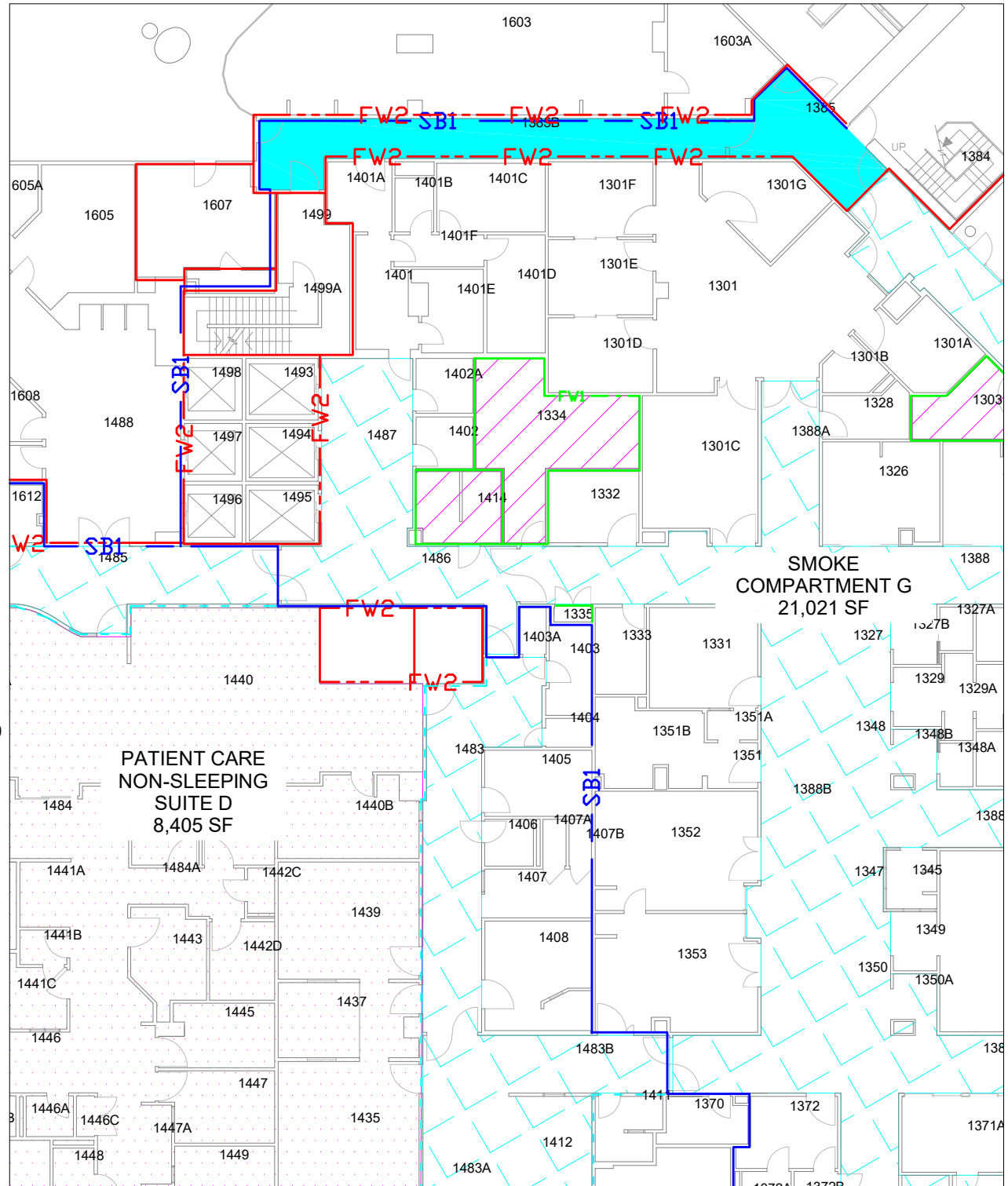
- 1 HR Fire Barrier **Layer Name**, F-Barrier-1HR; **Color**, Green; **Line type**, FB1
- 2 HR Fire Barrier **Layer Name**, F-Barrier-2HR; **Color**, Red; **Line type**, FB2
- 3 HR Fire Barrier **Layer Name**, F-Barrier-3HR; **Color**, 192; **Line type**, FB3
- 4 HR Fire Barrier **Layer Name**, F-Barrier-4HR; **Color**, 32; **Line type**, FB4
- 1 HR Fire Wall **Layer Name**, F-Wall-1HR; **Color**, Green; **Line type**, FW1
- 2 HR Fire Wall **Layer Name**, F-Wall-2HR; **Color**, Red; **Line type**, FW2
- 3 HR Fire Wall **Layer Name**, F-Wall-3HR; **Color**, 192; **Line type**, FW3
- 4 HR Fire Wall **Layer Name**, F-Wall-4HR; **Color**, 32; **Line type**, FW4
- 1 HR Smoke Barrier **Layer Name**, F-SBAR-1HR; **Color**, Blue; **Line type**, SB1
- 2 HR Smoke Barrier **Layer Name**, F-SBAR-2HR; **Color**, Red; **Line type**, SB2
- Smoke Partition **Layer Name**, F-SPAR; **Color**, 190; **Line type**, SP
- 1 HR Fire Partition **Layer Name**, F-FPAR-1HR; **Color**, 231; **Line type**, FP1
- ½ HR Fire Partition **Layer Name**, F-FPAR-1HALF; **Color**, 231; **Line type**, FPHALF
- Smoke Resistive Construction; **Layer Name**, F-WALL-SRES; **Color**, Cyan; **Line type**, SRES
- Horizontal Exit; **Layer Name**, F-Horz Exit; **Color**, 94; **Line type**, HE
- **Layer**, Hazardous Area; **Layer Name**, F-AREA-HAZD; **Color**, Magenta; **Hatch type**, ANSI31
- **Layer**, Suite Area; **Layer Name**, F-AREA-SUITE; **Color**, Magenta; **Hatch type**, DOTS
- **Layer**, 2 Hour Exit Passageway; **Layer Name**, F-EXIT-2 HR; **Color**, Cyan; **Hatch type**, SOLID
- **Layer**, Exit Access Corridor Smoke; **Layer Name**, F-EXIT-SMOKE; **Color**, Cyan; **Hatch type**, ANGLE
- **Layer**, Annotation Text Labeling Defined Areas; **Layer Name**, F-ANNO-TEXT; **Color**, Black

# LEGEND

- - - FB1 1 HR FIRE BARRIER
- - - FB2 2 HR FIRE BARRIER
- - - FB3 3 HR FIRE BARRIER
- - - FB4 4 HR FIRE BARRIER
- - - FW1 1 HR FIRE WALL
- - - FW2 2 HR FIRE WALL
- - - FW3 3 HR FIRE WALL
- - - FW4 4 HR FIRE WALL
- - - SBI 1 HR SMOKE BARRIER
- - - SMOKE PARTITION
- - - SMOKE RESISTIVE CONST
- - - HE HORIZONTAL EXIT
- - - FP1 1 HR FIRE PARTITION
- - - FP1/2 1/2 HR FIRE PARTITION
-  EXIT ACCESS CORRIDOR
-  2 HR EXIT PASSAGEWAY
-  HAZARDOUS AREA
-  SUITE

# LABELS

- CARE SUITE - SLEEPING
- CARE SUITE- NON-SLEEPING
- SMOKE COMPARTMENT WITH SIZE
- OCCUPANCY -USE GROUP AREAS AND OCCUPANT LOAD



## Life Safety Line Types

\*FB1,1 HR Fire Barrier

A,.177527,-.096957,.046256,-.096957,.177527,-.004554,["FB1",PEA\_Notes,y=-.052322,s=.1,u=0],-.249357

\*FW1,1 HR Fire Wall

A,.177527,-.096957,.046256,-.096957,.177527,-.004554,["FW1",PEA\_Notes,y=-.052322,s=.1,u=0],-.249357

\*FB2,2 HR Fire Barrier

A,.177527,-.05137,.048144,-.046256,.046256,-.048144,.177527,-.004554,["FB2",PEA\_Notes,y=-.052322,s=.1,u=0],-.249357

\*FW2,2 HR Fire Wall

A,.177527,-.05137,.048144,-.046256,.046256,-.048144,.177527,-.004554,["FW2",PEA\_Notes,y=-.052322,s=.1,u=0],-.249357

\*FB3,3HR Fire Barrier

A,.177527,-.036914,.046256,-.013786,.046256,-.013786,.046256,-.036914,.177527,-.004554,["FB3",PEA\_Notes,y=-.052322,s=.1,u=0],-.249357

\*FW3,3HR Fire Wall

A,.177527,-.036914,.046256,-.013786,.046256,-.013786,.046256,-.036914,.177527,-.004554,["FW3",PEA\_Notes,y=-.052322,s=.1,u=0],-.249357

\*FB4,4HR Fire Barrier

A,.177527,-.006893,.046256,-.013786,.046256,-.013786,.046256,-.013786,.046256,-.006893,.177527,["FB4",PEA\_Notes,x=.004554,y=-.052322,s=.1,u=0],-.253911

\*FW4,4HR Fire Wall

A,.177527,-.006893,.046256,-.013786,.046256,-.013786,.046256,-.013786,.046256,-.006893,.177527,["FW4",PEA\_Notes,x=.004554,y=-.052322,s=.1,u=0],-.253911

\*SB1,1 Hr Smoke Barrier

A,.355053,-.062789,["SB1",PEA\_Notes,y=-.048032,s=.1,u=0],-.297466,.177527,-.120085,.355053

\*SB2,2 Hr Smoke Barrier

A,.355053,-.062789,["SB2",PEA\_Notes,y=-.048032,s=.1,u=0],-.297466,.088763,-.044654,.088763,-.075431,.355053

\*SP,Smoke Partition

A,0.25,-0.09375

\*SR,Smoke Resistive Construction

A,0.046875,-0.09375

\*HE,2 Horizontal Exit

A,.355053,-.062789,["HE",PEA\_Notes,y=-.048032,s=.1,u=0],-.297466,.088763,-.044654,.088763,-.075431,.355053

\*FP1,Fire Partition 1HR

A,.177527,-.096957,.046256,-.096957,.177527,-.054554,["FP1",Standard,y=-.052322,s=.1,u=.0],-.34935

\*FPHALF,Fire Partition 1/2 HR

A,.177527,-.096957,.046256,-.096957,.177527,-.054554,["FP1/2",Standard,y=-.052322,s=.1,u=.0],-.50935